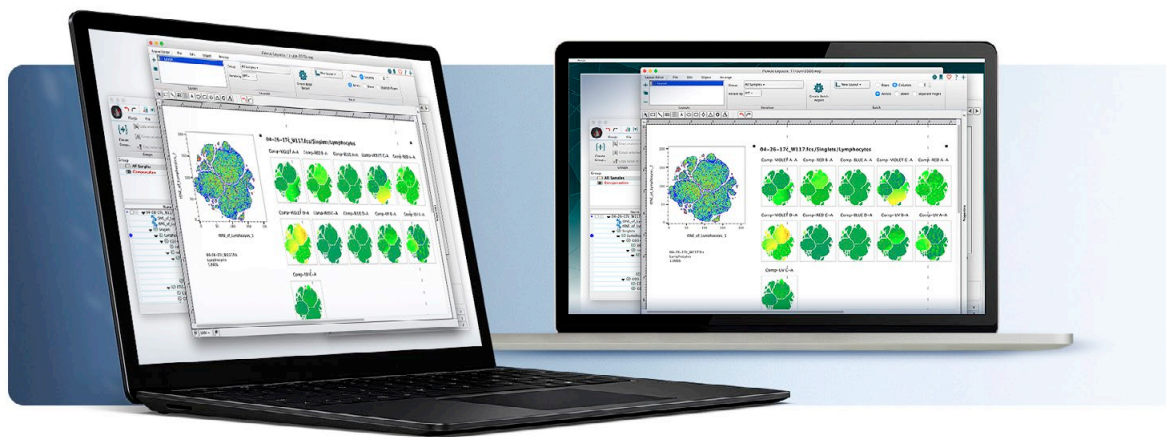


# FlowJo™ Software

Flow cytometry data analysis

Exploring and investigating large amounts of data related to your flow cytometry analysis can be challenging and time consuming.

FlowJo™ Software is the leading platform for single-cell flow cytometry analysis that helps you interpret your data quickly and effectively with accessible features for immunophenotyping, cell cycle analysis, proliferation, kinetics studies, quantitative population comparison, high-dimensional analysis, plate screening assays and more.



Compatible with Mac® computers or PCs

## Easy to use



- Intuitive interface with drag-and-drop functions
- Compatible with all standard cytometer data files
- Compatible with Mac® or PC

## Save time



- Quick table and report creation
- Fast calculation speeds
- Visualization tools to minimize time to insight

## Advanced data analysis



- Algorithmic analysis
- Automated analysis
- Extensible plugin architecture

## BD total solution



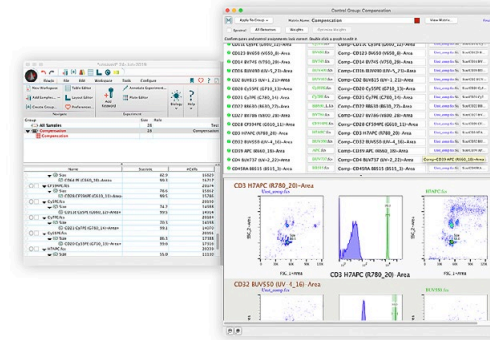
- End-to-end experiment capabilities
- Worldwide support
- 45+ years of experience in flow cytometry analysis



# Product description

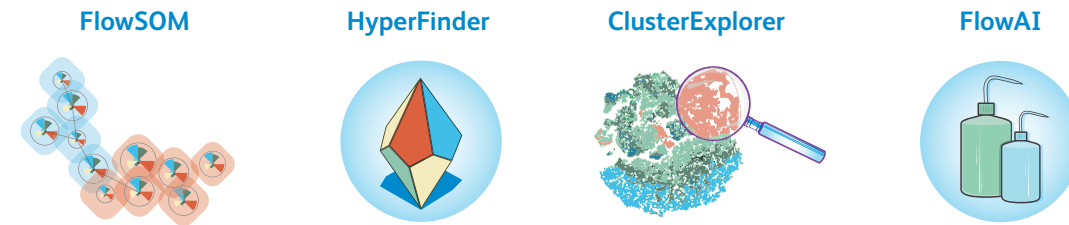
With an intuitive interface, specialized analysis platforms and an open-ended plugin architecture, FlowJo™ Software provides a rich analysis environment for flow cytometry data that is easy to use, versatile and extensible.

- Analyzes .fcs files from any standard cytometer
- Features intuitive drag-and-drop analysis
- Includes high-parameter data analysis tools to simplify complex analyses and allow for deep insights
- Allows experiment-based analysis
- Provides interactive data exploration
- Creates publication-quality graphics
- Offers a unique plugin architecture that allows for the inclusion of cutting-edge tools



Take your analysis to the next level with features such as spectral compensation, kinetic overlays, optimized BD FACSDiva™ Software support and more.

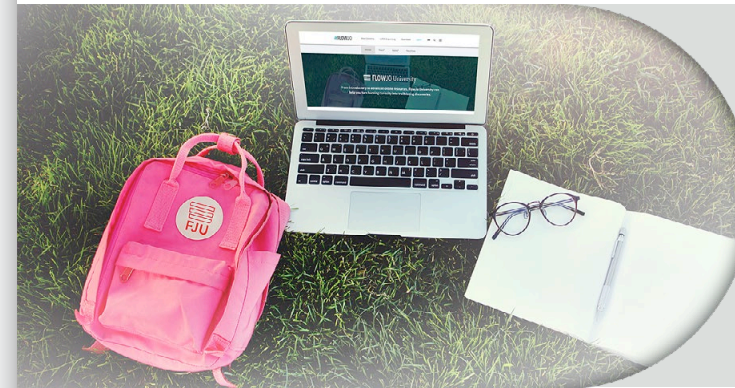
# FlowJo Exchange (flowjo.com/exchange)



FlowJo™ Software offers easy-to-use plugin architecture that brings ongoing informatics innovation to your data visualization. Some of our key plugins that will help your research include but are not limited to:

- Dimensionality reduction tools, including UMAP, TriMap and EmbedSOM
- Clustering tools, including Phenograph, FlowSOM and Xshift
- Visualization tools, including Cluster Explorer, Violin and Box plots
- QC tools, including FlowAI, CytoNorm and FlowCut

# FlowJo University (flowjo.com/learn/flowjo-university)



Learn from a large catalog of free webinars (live and recorded), tutorials and online material or self-guided training courses. From introductory to advanced online resources, FlowJo University offers self-paced training tools, tailored to your research needs.

## Why choose FlowJo™ Software?



**FlowJo™ Software is the leading platform\* for flow cytometry analysis:** \*In 2020, FlowJo™ Software was cited in leading immunology peer-reviewed journals more often than any other flow cytometry analysis software. No matter the cytometer you are using, FlowJo™ Software makes it easy to access your data and extract insights.



**Advanced analysis tools:** FlowJo™ Software is equipped with a suite of biological models and statistical tools including over 40 plugins for quality control, dimensionality reduction or clustering. FlowJo™ Software supports these tools with improved calculation speeds on large workspaces.



**A complete set of compensation tools:** FlowJo™ Software includes both traditional and spectral compensation tools, with both options compatible with either a standard MFI based approach or the new linear regression-based approach, AutoSpill. Compensation quality can be assessed via Spillover Spreading Matrix (SSM) or Total Spread Matrix (TSM) or visually through a variety of graphics, including matrix overlays.



**Interactive data exploration:** Graphs are linked to populations, making it simple to instantly adjust and update reports. Use Cluster Explorer to interrogate high-dimensional data interactively using visualization techniques or the formatting and drawing tools. Quickly generate layouts and export reports in a variety of formats.

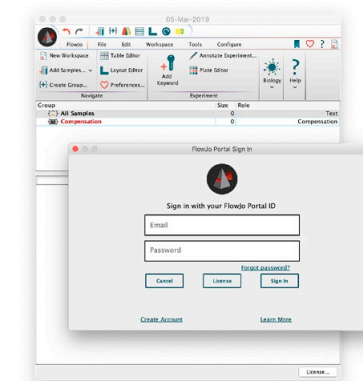


**Unparalleled support:** We pride ourselves on excellent product and technical support. Our products are backed by 45+ years of flow cytometry expertise and support resources. Sales and application scientist teams provide timely and professional support to help optimize your daily experience with FlowJo™ Software.

# FlowJo Portal

FlowJo Portal is our user-based licensing system for authenticating FlowJo™ Software subscriptions. With more flexibility for group administrators, users can analyze their data on up to four computers. With a FlowJo Portal annual subscription license you have:

- Automatic access to new version releases
- One account to access current and future informatics products and versions, including FlowJo™ Software and SeqGeq™ Software licenses
- Group discounts for 5+ users



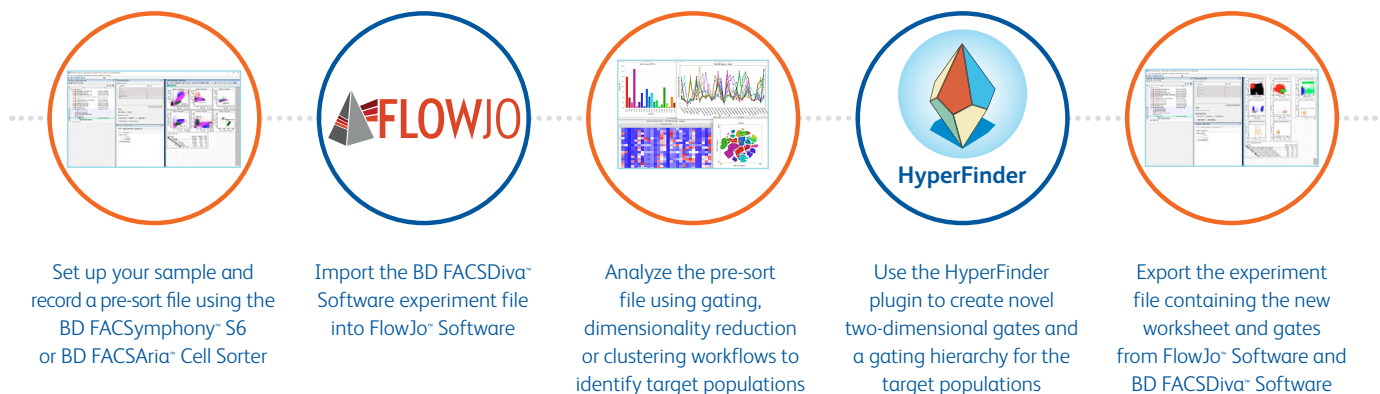
# BD total solution

BD also provides high-quality flow cytometry reagents and instruments to help you drive your research forward.

## Together these solutions provide:

- Direct import of BD FACSDiva<sup>®</sup> Software experiment attributes into FlowJo<sup>®</sup> Software
- Unique visualizations with index sorted data from BD cell sorters and the IndexSort plugin
- Flexibility for both spectral and traditional compensation workflows
- Easy panel design and reagents ordering (BD Horizon<sup>™</sup> and BD<sup>®</sup> AbSeq Reagents)

With the HyperFinder plugin and a complete high-parameter solution from BD cytometers, you can identify populations to sort with gates that have been algorithmically created to validate or purify a multidimensional subpopulation.



## We are here to help you

We offer many ways to learn and try on [flowjo.com](http://flowjo.com):

### Test the capabilities with free trials

- 30-day trial for FlowJo<sup>™</sup> Software
- 60-day trial for SeqGeq<sup>™</sup> Software

### Learning tools

- Free training on FlowJo University
- Monthly webinars and product demos

### Continued support

- Technical and research support
- Continuous training

For Research Use Only. Not for use in diagnostic or therapeutic procedures.

BD and FlowJo are one! Supporting you and your research from design to discovery.  
[FlowJo.com](http://FlowJo.com)

BD Life Sciences, San Jose, CA, 95131, U.S.

FlowJo, Ashland, OR, 97520, U.S.

541.201.0022

[bd.com](http://bd.com)

BD, the BD Logo, BD FACSDiva, BD FACSymphony, FACSAria, FlowJo, Horizon and SeqGeq are trademarks of Becton, Dickinson and Company or its affiliates. All other trademarks are the property of their respective owners.  
© 2022. All rights reserved. BD-53291 (v1.0) 0422

